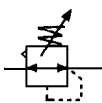


AR Series Max Flow Air Treatment

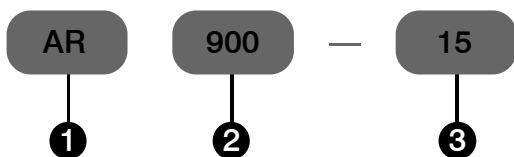
Regulator



Specification:

Type	AR900-15	AR900-20
Port size G	1 1/2"	2"
Gauge thread G	1/4"	
Fluid	Compressed Air	
Operating pressure range MPa	0.15~0.85	
Ambient temperature °C	-10~60	

How to order



①	AR Regulator
②	Type : 900
③	Port size : 15:G1 1/2", 20:G2"

Dimension(mm):

AR900-15 20

