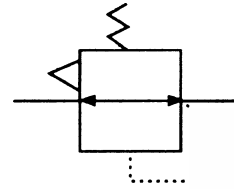


**IR Air Source Treatment Unit**

**Precision Regulator**

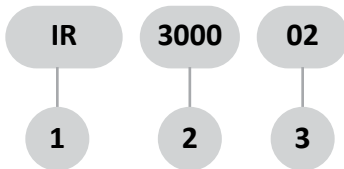
- Compact and light weight.
- Flow rate is 20% higher than that of traditional ones(Max.Flow Rate:1 l/min).
- Exhaust rate is 5 times higher than that of traditional ones.
- Precise oressure setting.
- Easy for mounting, capable of mounting individually, together with modular filter combination and mounting on panel.
- Piloted exhaust and main exhaust are separated.
- Applicable for clean room.



**Specification:**

Type	IR3000-02/03/04	IR3010-02/03/04	IR3020-02/03/04
Port size G	02:G1/4" ,03:G3/8" ,04:G1/2"		
Fluid	Compressed Air		
Pressure range MPa	0.05~0.2	0.05~0.4	0.05~0.8
Ambient temperature °C	-5~60		
Sensitivity	0.2%		
Repeated precision	±5%		
Ratednflow L/min	1100		

**How to order:**



<b>1</b>	IR: Precision Regulator
<b>2</b>	3000: Setted pressure
<b>3</b>	Port size:02 G1/4"; 03: G3/8" ; G1/2"

**Dimension (mm)**

