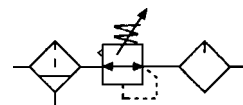


**AC,BC Air Source Treatment Unit**

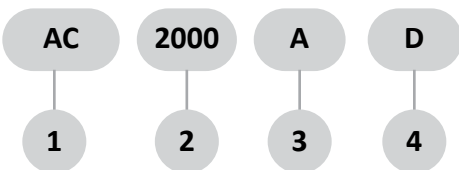
**Filter+Regulator+Lubricator**

**Specification:**

Type	AC2000A	BC2000A	BC3000A	BC4000A
Port size G	1/4"	1/4"	3/8"	1/2"
Gauge thread G	1/8"			
Fluid	Compressed Air			
Filter precision	5µm or 40 µm			
Operating pressure range MPa	0.15~0.85			
Max.Flow rate L/min	700			1400
Ambient temperature °C	-10~60			
Oil recommended	ISO VG32			
Optional	-	●	●	●

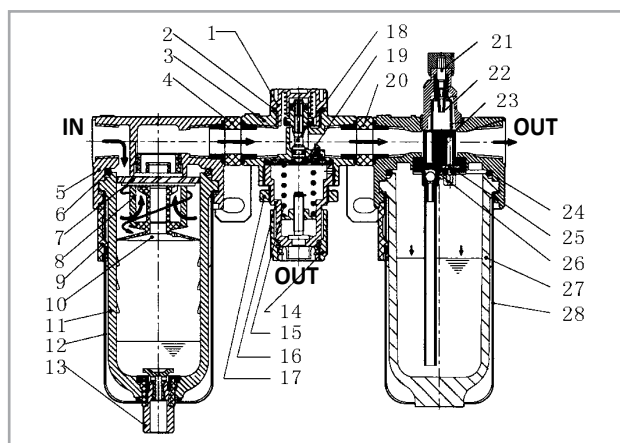


**How to order:**



1	AC , BC Filter+Regulator+Lubricator
2	2000:G1/4" , 3000:G3/8" , 4000:g1/2"
3	A: Improved type ; Blank: Old type
4	<input type="checkbox"/> : Differential pressure drain , D: Auto-drain;

**Inner structure drawing:**

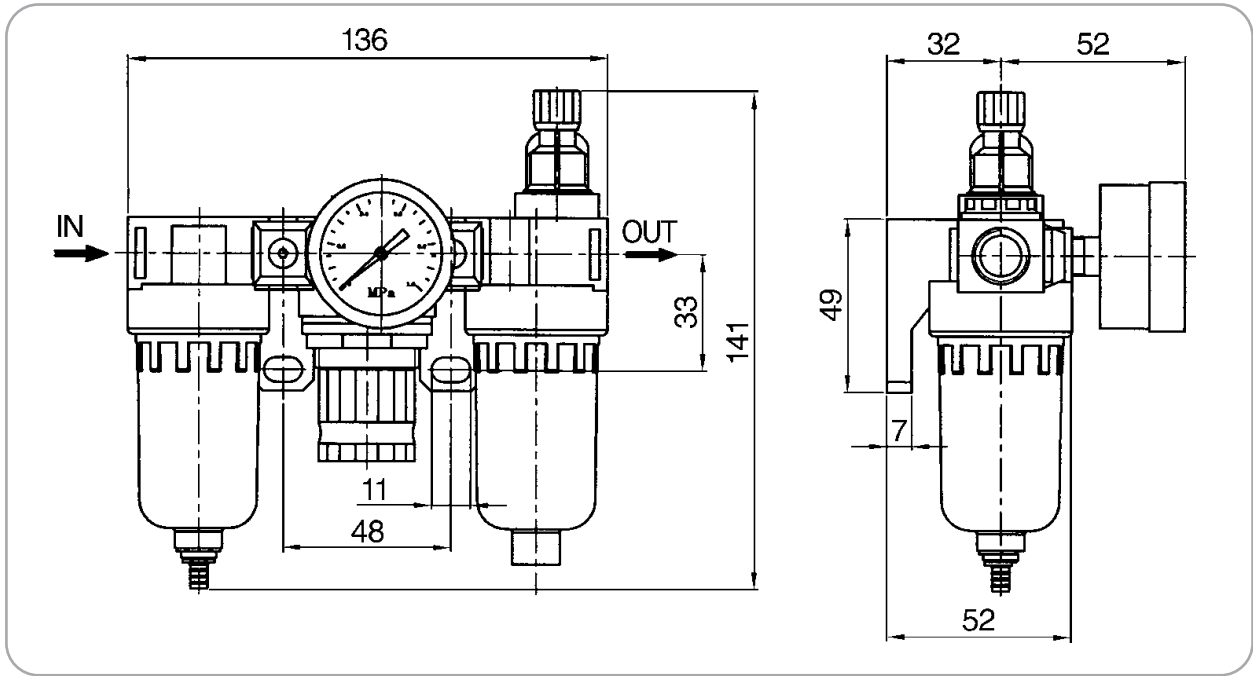


No	code	No	code
1	Pressure nut	15	cartridge
2	O-ring	16	baffle body
3	Regulator body	17	water cup
4	Connecting block	18	guard cup
5	Filter body	19	O - ring
6	O-ring	20	drain doom
7	Rotated ring	21	clip
8	Cartridge	22	drain nozzle
9	Press-button	23	drain spring
10	Cartridge basic	24	breaket
11	PC cup	25	connecting block
12	Guard cup	26	O-ring
13	Drain	27	doom button
14	Regulator screw cap	28	adjust pin

AC,BC Air Treatment Unit

Dimension (mm):

■ AC Series



■ BC Series

