

SE Series Control Valve

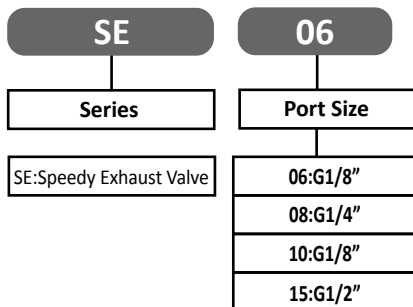
Speedy Exhaust Valve



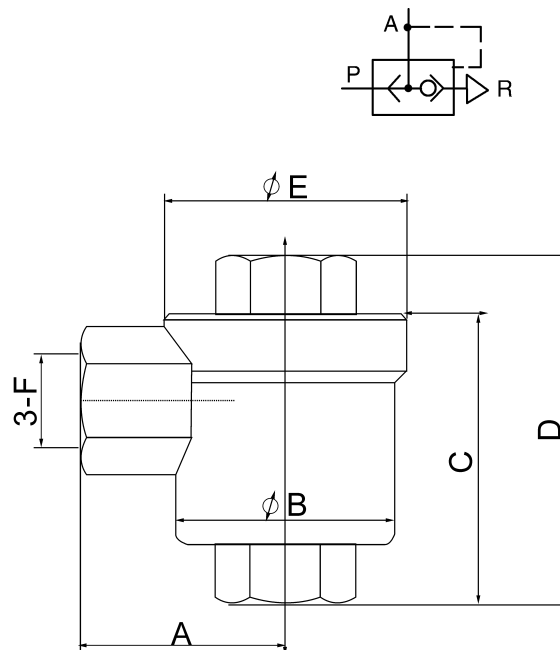
Specification:

Type	SE - 06	SE - 08	SE - 10	SE - 15
Fluid	Compressed Air			
Calibre Code	06	08	10	15
Port size (G)	G1/8"	G1/4"	G3/8"	G1/2"
Operating pressure (MPa)	0.2-0.8			
Ambient temperature °C	-5 - 60			

How to order:



Dimension(mm):



Type	A	C	D	E	F	G
SE-06	27	30	42	50	φ 32	G1/8"
SE-08	27	30	42	50	φ 32	G1/4"
SE-10	36	41	51	62	φ 45	G3/8"
SE-15	44	48	64	76	φ 55	G1/2"