

A*Y Hidrolik Pilotlu Kilitleme Valfi / A*Y Hydraulic-Operated Check Valve



Technical specification

Specification	03	06	10
Max. working pressure (Mpa)	31.5		
Control pressure (Mpa)	0.5~31.5		
Max. Flow (L/min)	100	350	550
Working fluid	Mineral oil; phosphate-ester		
Fluid temp. (°C)	-20~70		
Viscosity (mm ² /s)	2.8~380		
Opening pressure (Mpa)	a:0.15	b:0.3	c:0.6 d:1.0
Weight (kg)	1.8	4.7	7.8
Cleanliness	The maximum allowable cleanliness of the oil should be according to 9th degree of Standard NAS1638. It is suggested that the minimum filter rating should be β 10≥75.		

Hydraulic-operated check valve allows oil to flow in only one direction, and it can not allow the oil to flow in the opposite direction unless it uses the hydraulic control.

Hydraulic-operated check valve can be used as two way on-off valve, and also can be seen as a pressure retaining valve or a sustaining valve of the standing fluid cylinders.

Model description

Hydraulic-operated check valve
 A1Y Internal discharge type
 A2Y External discharge type

Specification

Plate connecting type	Pipe connecting type	Screw thread connector
03 NS10	10 NS10	G1/2"orM22x1.5
	15 NS15	G3/4"orM27x2
06 NS20	20 NS20	G1"orM33x2
	25 NS25	G1 1/4"orM42x2
10 NS30	30 NS30	G1 1/2"orM48x2

Omit Plate connecting type
 G Pipe connecting type-G Screw
 G2 Pipe connecting type-M Screw

A with unloading function
 B Without unloading function

A,Y - * * * - * / * 50 *

Remarks

Serial number

Seal material
 Omit NBR Seals
 V FPM Seals

Opening pressure
 a 0.15
 b 0.3
 c 0.6
 d 1.0

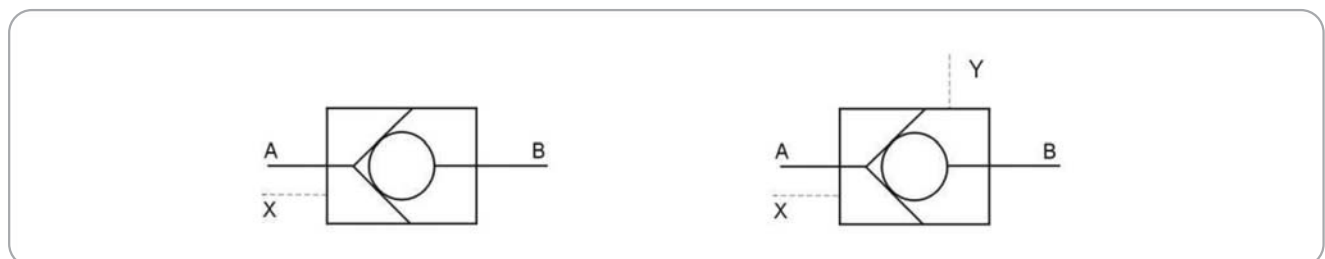
Remarks

Serial number

Seal material
 Omit NBR Seals
 V FPM Seals

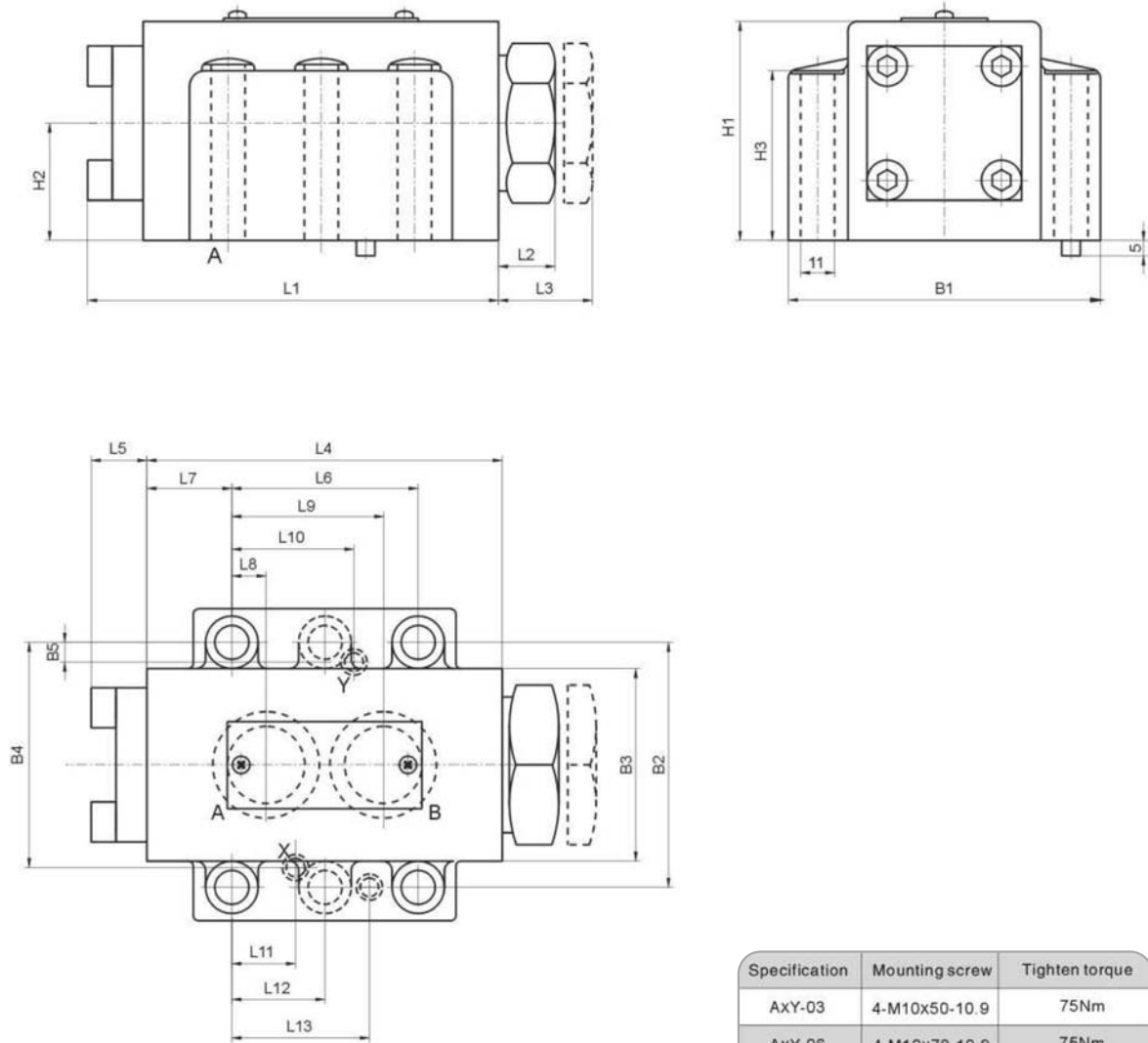
Opening pressure
 a 0.15
 b 0.3
 c 0.6
 d 1.0

Code symbol



A*Y Hidrolik Pilotlu Kilitleme Valfi / A*Y Hydraulic-Operated Check Valve

External dimensions



Specification	Mounting screw	Tighten torque
AxY-03	4-M10x50-10.9	75Nm
AxY-06	4-M10x70-10.9	75Nm
AxY-10	6-M10x80-10.9	75Nm

Model	Specification	L1	L2	L3	L4	L5	L6	L7	L8	L9	L10		L11	L12	L13
											A1Y	A2Y			
A1Y	03	102	14.3	15.5	89	13	42.9	18.5	7.2	35.8	-	21.5	21.5	-	31.8
	06	133	18.3	47.7	115	18	60.3	27.5	11.1	49.2	-	39.5	20.6	-	44.5
A2Y	10	156	35.6	46.1	134	22.1	84.2	39	16.7	67.5	-	42.1	24.6	42.1	62.7

Model	Specification	B1	B2	B3	B4	B5		H1	H2	H3
						A1Y	A2Y			
A1Y	03	84	66.7	44	58.8	-	7.9	51	29	36
	06	101	79.4	62.4	73	-	6.4	71	38	55
A2Y	10	117	96.8	77	92.8	-	3.8	85	42.5	70