

**Pressure Control Valve Series**

**Y/YW Pilot - Operated Relief Valve / Solenoid Relief Valve**

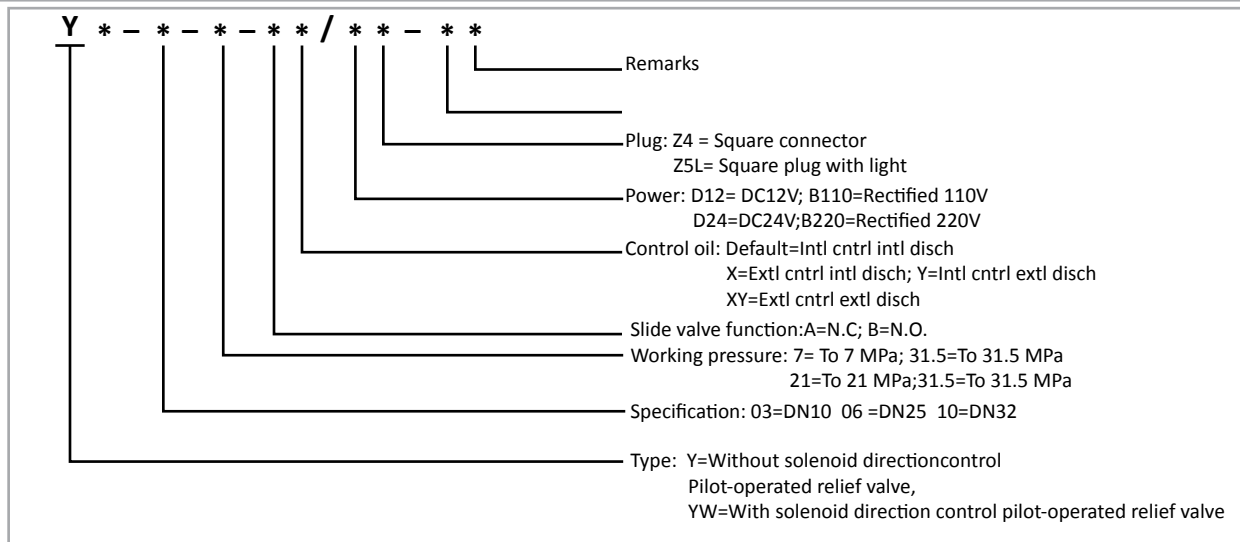
**Technical Specification**



Model	03	06	10
Maximum flow (l/m)	100	200	400
Working pressure A/B/X (MPa)	To 31.5		
Back pressure	Y (MPa)	To 31.5	
	YW (MPa)	To 6	
Minimum control pressure (MPa)	Flow - related		
Minimum control pressure (MPa)	31.5		
Hydraulic fluid	Mineral oil, phosphate - ester		
Viscosity (mm <sup>2</sup> /s)	2.8~100		
Fluid temp. (°C)	-20~70		
Solenoid performance	See FW-01 Solenoid direction control valve		

Y/YW valve is a pilot-operated relief valve, with a conical structure for both the pilot valve and the main valve. Model Y is mainly used to the system pressure while Model YW can control the system pressure or unload it.

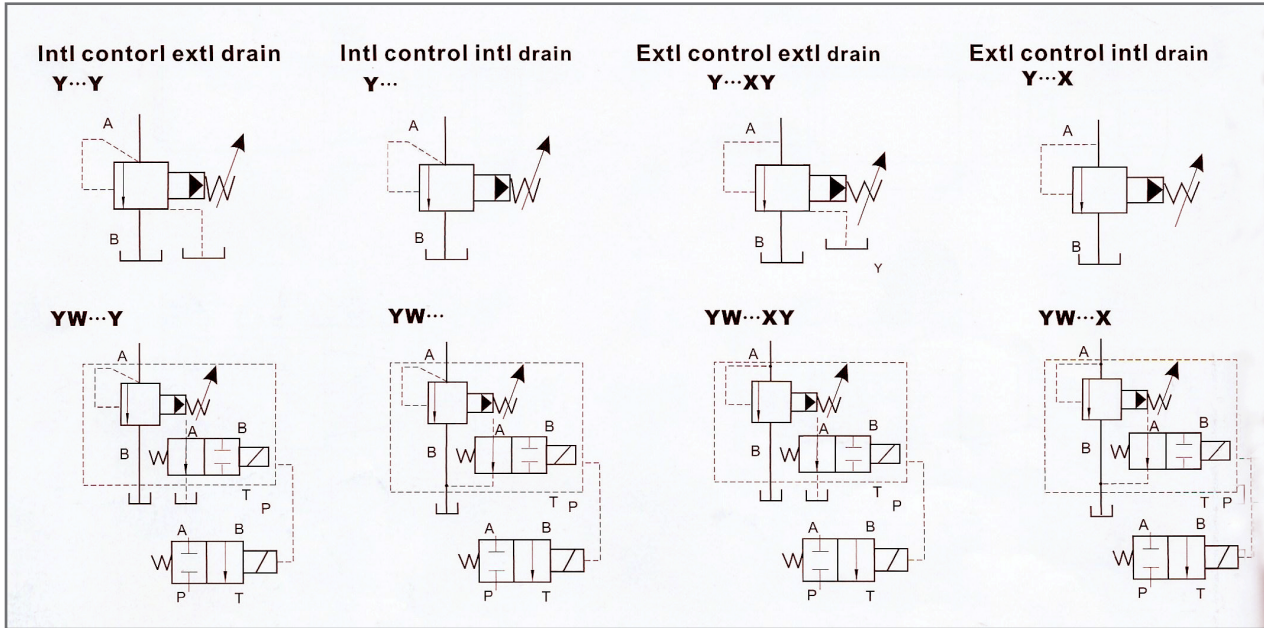
**Model description**



Pressure Control Valve Series

Y/YW Pilot - Operated Relief Valve / Solenoid Relief Valve

Function Symbol



Mounting Dimensions

