

4H Series Control Valve

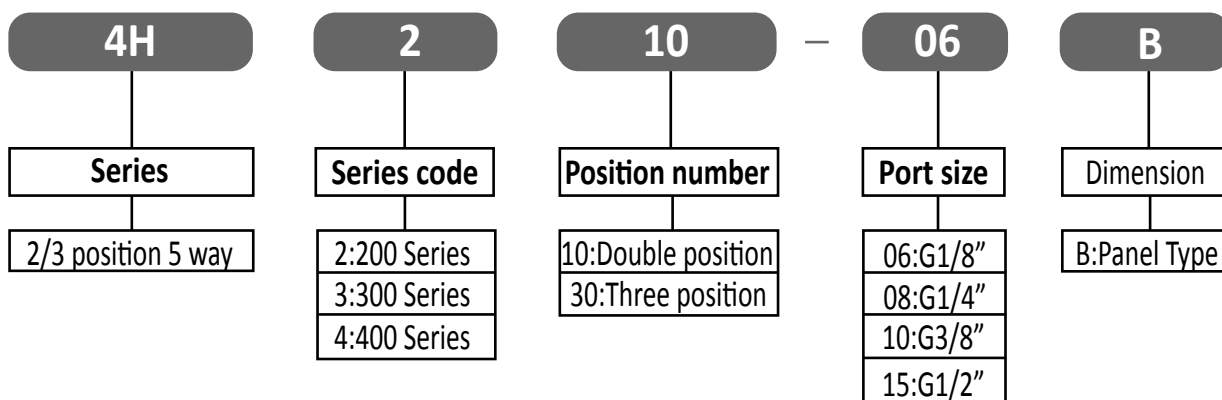
Hand - pull Valve



Specification:

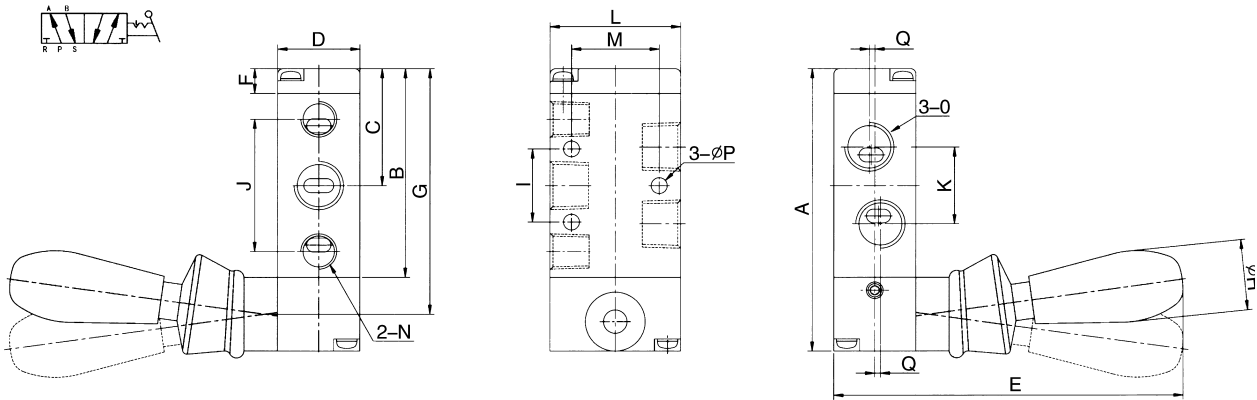
Type	4H210-06	4H210-08	4H230-08	4H310-08	4H310-10	4H330-10	4H410-15	4H430-15
Position number	2 position 5 way		3 position 5 way	2 position 5 way		3 position 5 way	2 position 5 way	3 position 5 way
Fluid	Compressed Air (Filtered, 40 μm)							
Acting type	input-output-exhausted	input=output=G1/4"		input-output-exhausted	input=output=G3/8"		input=output=G3/8"	
Port size	=G1/8"	exhausted=G1/8"		=G1/4"	exhausted=G1/4"		exhausted=G1/4"	
Operating pressure range					0.2 ~ 0.8			
Ambient temperature					0-5 ~ 60			

How to order:



4H Series Control Valve

Dimension(mm):



Type	4H210-08(06)	4H230-08(06) (Auto-restoration)	4H310-10(08)	4H330-10(08) (Auto-restoration)	4H410-15	4H430-15 (Auto-restoration)
A	76	95	96	115	126	147
B	56.5	75.5	72	91	102	123
C	31.5	31.5	40	60	55.5	76.5
D	22	22	27	27	34	34
E	95	95	100	100	110	110
F	6.5	6.5	7.5	7.5	7.5	7.5
G	66.5	85.5	84	103	114	135
H	18	18	18	18	18	18
I	20	20	24	24	28	28
J	36	36	45	45	63	63
K	21	21	24	24	36	36
L	35	35	40	40	50	50
M	21	21	27	27	35	35
N	G1/8	G1/8	G3/8	G3/8	G1/2	G1/2
O	G1/4(G1/8)	G1/4(G1/8)	G3/8(G1/4)	G3/8(G1/4)	G1/2	G1/2
P	4.3	4.3	4.3	4.3	5.5	5.5
Q	1.5(-)	1.5(-)	2(-)	2(-)	-	-