

KA Series Control Valve

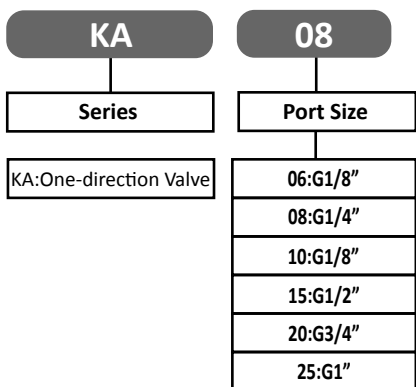
Check Valve



Specification:

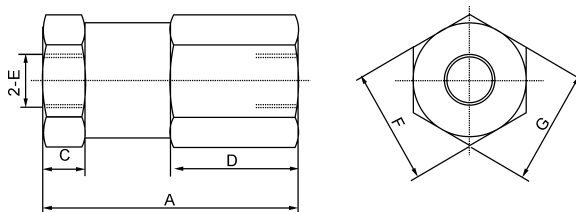
Type	KA - 06	KA - 08	KA - 10	KA - 15	KA - 20	KA - 25
Fluid	Compressed Air					
Calibre Code	06	08	10	15	20	25
Port size	G1/8"	G1/4"	G3/8"	G1/2"	G3/4"	G1"
Operating pressure (MPa)	0.2-0.8					
Ambient temperature °C	-5 ~ 60					

How to order:

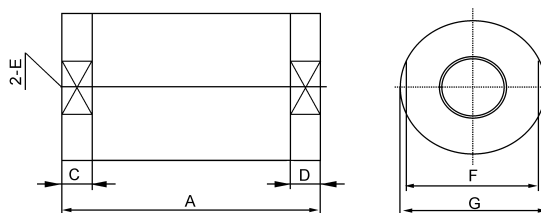


Dimension(mm):

KA - 06, 08



KA-10,15,20,25



Type	A	C	D	E	F	G
KA-06	48	8	24	G1/8"	21	21
KA-06	48	8	24	G1/4"	21	21
KA-10	68.5	8	8	G3/8"	32	φ 35
KA-15	68.5	8	8	G1/2"	32	φ 35
KA-20	95.5	8	8	G3/4"	47	φ 50
KA-25	95.5	8	8	G1	47	φ 50