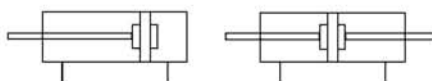


## MS Series Stainless Steel Cylinder



### Character

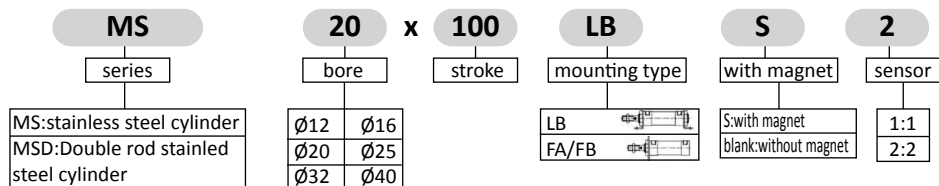
- Use imported non-lubrication oil seal, fits for high movement.
- No draw rod type, tube and covers made by roll extrusion.
- Has non-lubrication bearing, no maintenance for long time work with longer life than usual one.
- Magnet in piston, whole series can be attached with sensor switch.



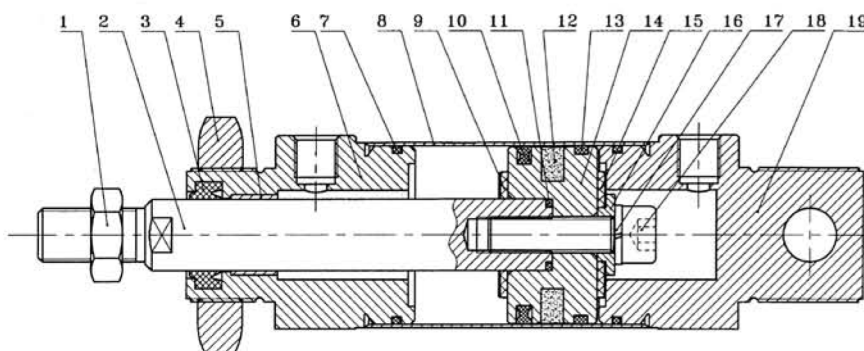
### Specification

Mode	12	16	20	25	32	40
Motion	Double acting					
Series	MS,MSD					
Fluid	air					
Operating pressure range (Mpa)	0.1~0.9					
Operating speed (mm/sec)	50-500					
Ambient temperature (°C)	-10~70°C					
Port size	M5			1/8"		

### How to order



### Inner structure drawing

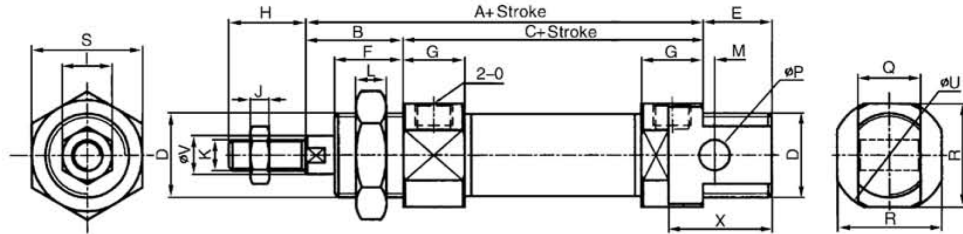


1	hexagon	11	O-ring
2	piston	12	magnet
3	compages seal	13	guard seals
4	hexagon nut	14	piston
5	oiled bearing	15	crashworthy washer
6	front cover	16	washer
7	O-ring	17	spring washer
8	tube	18	inner hexagon boll
9	craworthy washer	19	rear cover
10	C-ring		

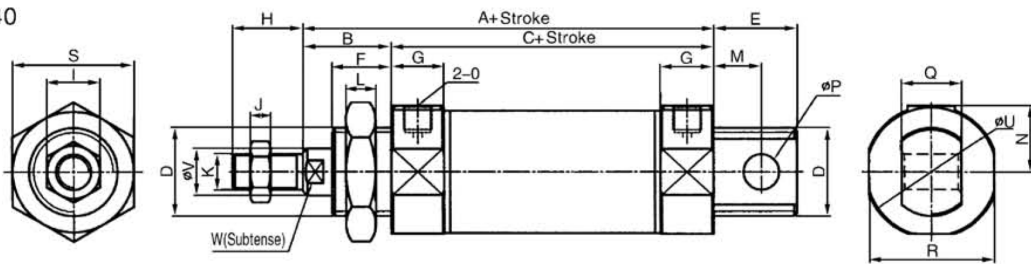
**MS Series Stainless Steel Cylinder**

**Standard Dimension**

■  $\phi$  12~  $\phi$  20

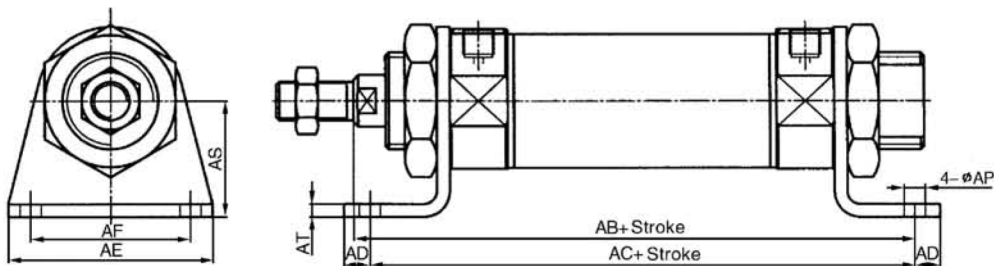


■  $\phi$  25~  $\phi$  40



Bore/stroke	A	B	C	D	E	F	G	H	I	J	K	L	M	N	O	P	Q	R	U	V	W	X
12	72	22	50	M16x1.5	16	17	11.5	16	10	4	M6	6	5	-	M5	6	12	19	21	6	-	23
16	79	22	57	M16x1.5	16	17	12	16	10	4	M6	6	5	-	M5	6	12	19	21	6	-	23
20	92	24	68	M22x1.5	18	18	16	20	13	5	M8	8	3	15	G1/8"	8	16	27	30	8	7	27
25	96	27	68	M22x1.5	20	20	16	22	17	6	M10x1.25	8	8	15	G1/8"	8	16	27	30	10	9	-
32	106	30	76	M24x1.5	24	20	18	22	17	6	M10x1.25	10	14	19	G1/8"	10	16	32	36	12	10	-
40	114	30	84	M30x1.5	28	20	18	24	19	7	M12x1.25	10	16	22.4	G1/8"	12	20	41	45	16	14	-

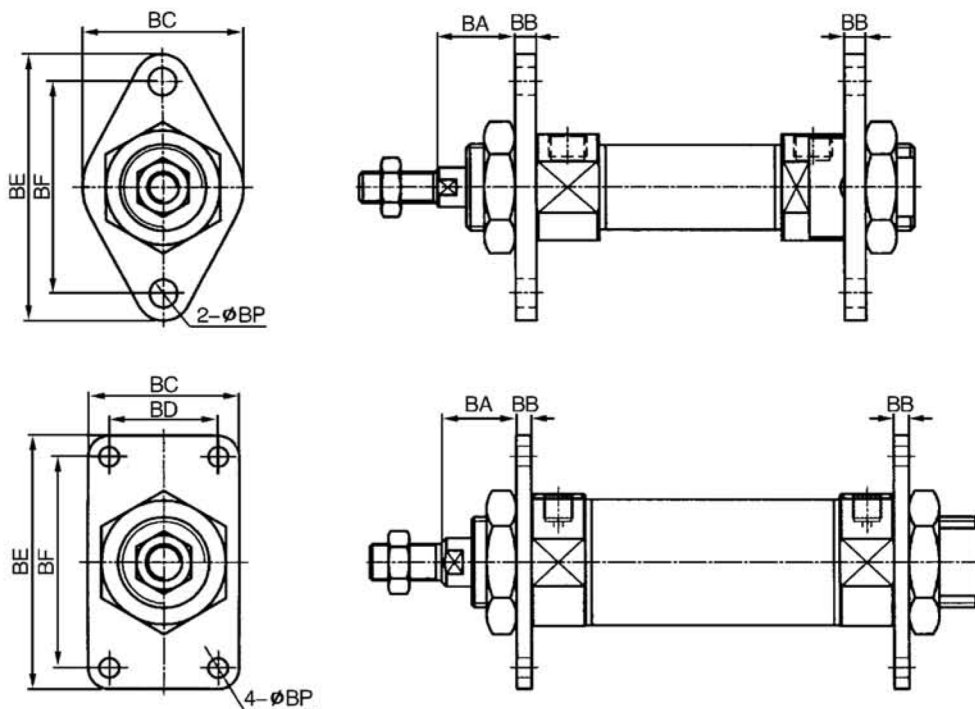
**Foot bracket (LB)**



Bore/stroke	AB	AC	AD	AE	AF	AP	AT
12	85	76	6	43	32	5.5	3
16	91.5	82	6	43	32	5.5	3
20	108	100	7.5	53	40	6.6	3
25	112	100	7.5	53	40	6.6	3
32	130	124	8	59	45	6.6	4
40	139	124	8	64	50	6.6	4

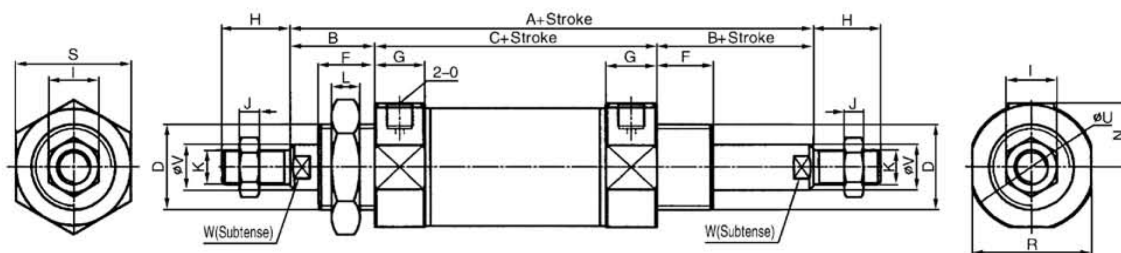
**MS Series Stainless Steel Cylinder**

**Rear flange**



Bore/stroke	BA	BB	BC	BD	BE	BF	BP
12	19	3	28	-	51	40	5.5
16	19	3	28	-	51	40	5.5
20	19	5	38	-	63	50	6.6
25	23	5	38	-	63	50	6.6
32	25	5	47	33	72	58	6.6
40	25	5	50	36	84	70	6.6

**Foot bracket (LB)**



Bore/stroke	A	B	C	D	E	F	G	H	I	J	K	L	M	N	O	P	R	S	U	V	W
12	94	22	50	M16x1.5	16	17	11.5	16	10	4	M6	6	5	-	M5	6	19	22	21	6	-
16	101	22	57	M16x1.5	16	17	12	16	10	4	M6	6	5	-	M5	6	19	22	21	6	-
20	116	24	68	M22x1.5	18	18	16	20	13	5	M8	8	3	15	G1/8"	8	27	27	30	8	7
25	124	27	68	M22x1.5	20	20	16	22	17	6	M10x1.25	8	8	15	G1/8"	8	27	27	30	10	9
32	136	30	76	M24x1.5	24	20	18	22	17	6	M10x1.25	10	14	19	G1/8"	10	35	32	38	12	10
40	144	30	84	M30x1.5	28	20	18	24	19	7	M12x1.25	10	16	22.4	G1/8"	12	42	41	45	16	14