

LWD Series Cylinder

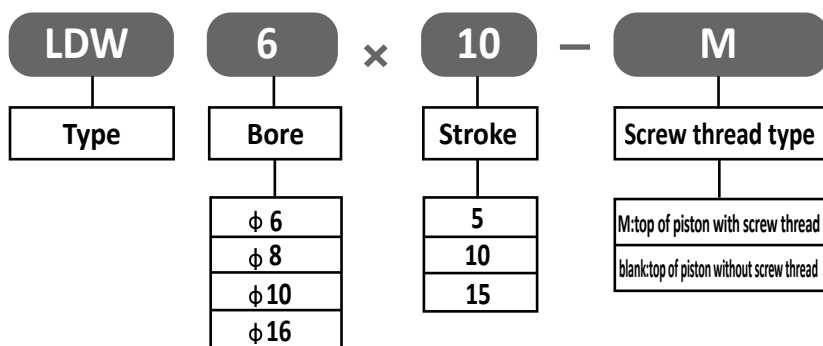
Screw Thread Cylinder

Specification:

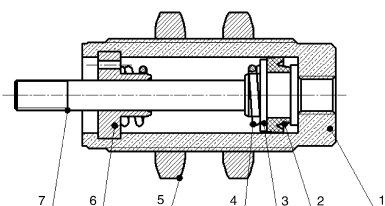
Mode	6	8	10	16
Motion	Single acting type			
Fluit	Compressed Air			
Operating pressure range(MPa)	5,10,15			
Stroke	0.2 0.8			
Ambient temperature (C)	-10 60			
Port size	M5 x 0.8			



How to order:

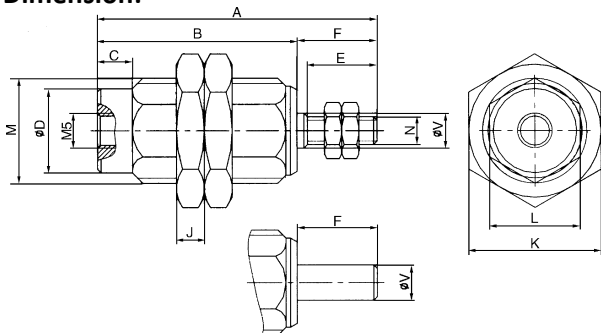


Inner structure drawing:



- 1 Cu tube with nickel
- 2 NBR Y - ring
- 3 AL piston
- 4 Stainless steel spring
- 5 Steel screw cap with nickel
- 6 Cu axial with nickel
- 7 Stainless steel piston rod

Dimension:



Bore	A	B	C	D	E	F	J	K	L	M	N	V
LWD6 x 5	29.5	21	4	8.5	3	8.5	3	14	9	M10 x 1	M3 x 0.5	3
LWD6 x 10	34.5	26	4	8.5	3	8.5	3	14	9	M10 x 1	M3 x 0.5	3
LWD6 x 15	41.5	33	4	8.5	3	8.5	3	14	9	M10 x 1	M3 x 0.5	3
LWD8 x 5	31	21	4	10	3.2	10	3.2	14	11	M12 x 1	M4 x 0.7	5
LWD8 x 10	39	29	4	10	3.2	10	3.2	14	11	M12 x 1	M4 x 0.7	5
LWD8 x 15	44	34	4	10	3.2	10	3.2	14	11	M12 x 1	M4 x 07	5
LWD10 x 5	35	23.5	5	12	3.2	11.5	4	19	13	M15 x 1.5	M4 x 07	5
LWD10 x 10	40	28.5	5	12	4	11.5	4	19	13	M15 x 1.5	M4 x 07	5
LWD10 x 15	47	35.5	5	12	4	11.5	4	19	13	M15 x 1.5	M4 x 07	5
LWD16 x 5	38	23	7	19.5	4	15	5	27	20	M22 x 1.5	M5 x 08	6
LWD16 x 10	48.5	33.5	7	19.5	5	15	5	27	20	M22 x 1.5	M5 x 08	6
LWD16 x 15	53.5	38.5	7	19.5	5	15	5	27	20	M22 x 1.5	M5 x 08	6