

Modular relief valve



Technical Specification

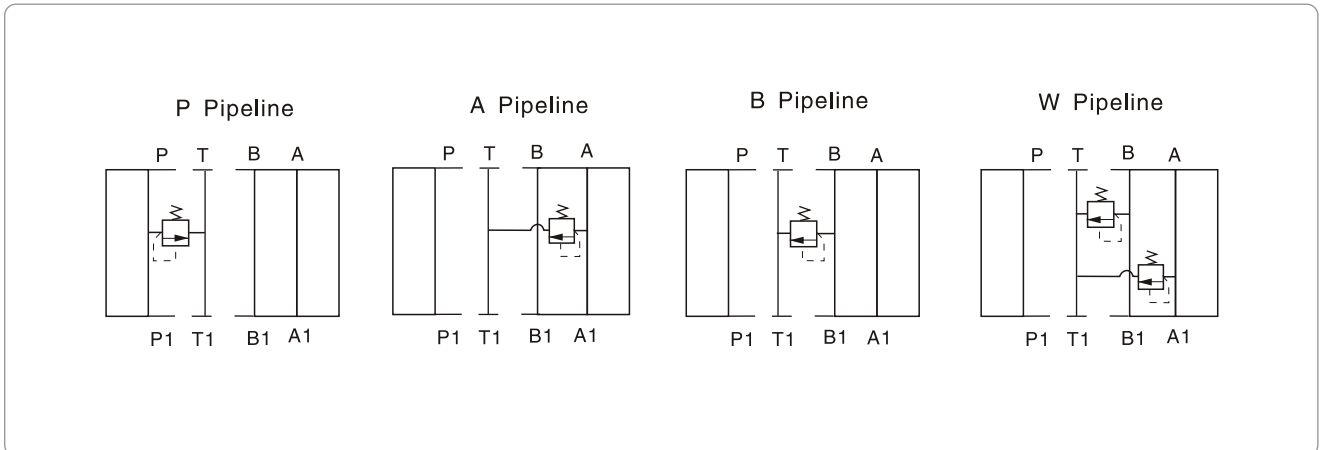
Specification	02	03		
Maximum working pressure (MPa)	31.5			
Max. Flow (L/min)	35	70		
Working fluid	Mineral oil; phosphate-ester			
Fluid temp. (°C)	-20~70			
Viscosity (mm ² /s)	12~380			
Working press (MPa)	7	14	21	31.5
Cleanliness	The maximum allowable cleanliness of the oil should be according to 9th degree of Standard NAS 1638. It is suggested that the minimum filter rating should be β ₁₀ ≥ 75.			

Model description

DY - * * - * - * / * 70 *

<p>Modular relief valve</p> <hr/> <p>Specification 02 DN 6 03 DN 10</p> <hr/> <p>P P Pipeline relief A A Pipeline relief B B Pipeline relief W A B Pipeline relief</p> <hr/> <p>Working pressure 5 to 5MPa 10 to 10MPa 20 to 20MPa 31.5 to 31.5MPa</p>	<p>Remarks</p> <hr/> <p>Serial number</p> <hr/> <p>Seal material Omit NBR Seals V FPM Seals</p> <hr/> <p>8 Handle</p>
--	---

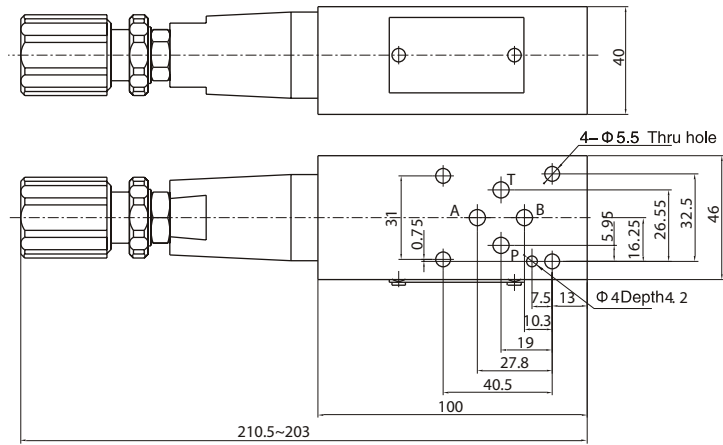
Code symbol



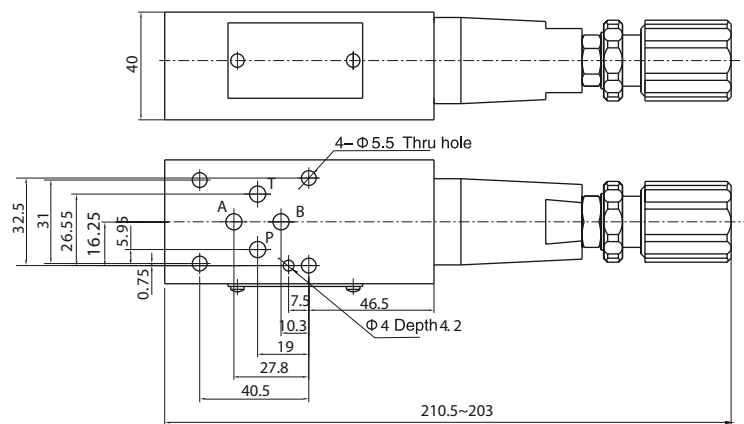
Modular relief valve

02 External dimensions

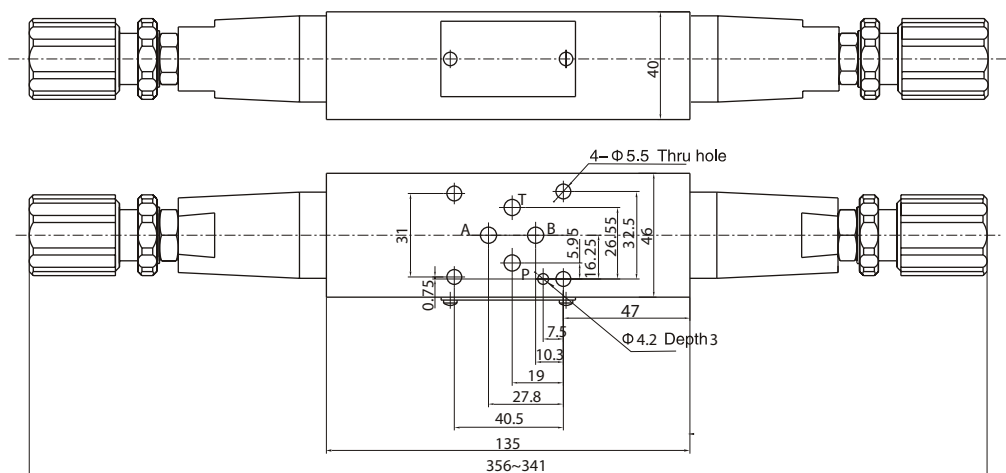
DY-02-A



DY-02-B,P



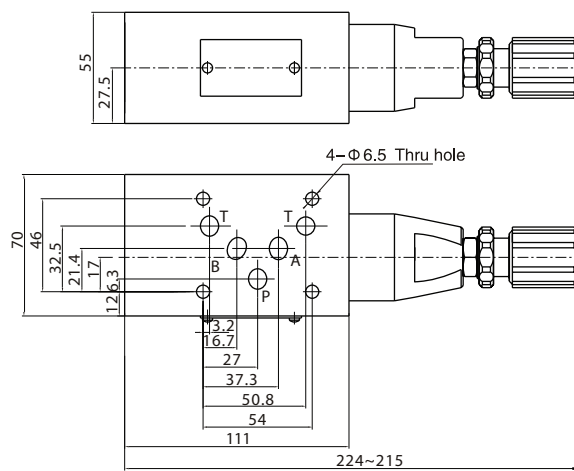
DY-02-W



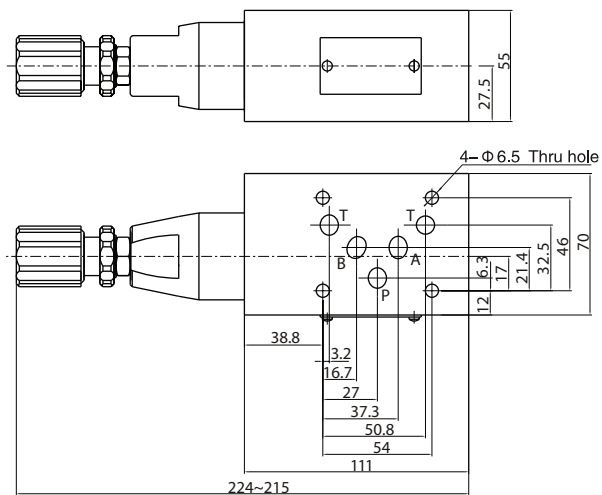
Modular relief valve

03 External dimensions

DY-03-A ...



DY-03-B,P ...



DY-03-W ...

